

Pedestrian Ramp Program

Fiscal Year 2021 Semi-Annual Progress Report

01

02

03

04

05

06

07

08

09

10

11

12

13

14

15

16

17

18

19

20

21

22

23

24

25

26

27

28

29

30

31

32

33

34

35

36

37

38

39

40

41

42

43

44

45

46

47

48

49

50

51

52

53

54

55

56

57

58

59

60

61

62

63

64

65

66

67

68

69

70

71

72

73

74

75

76

77

78

79

80

81

82

83

84

85

86

87

88

89

90

91

92

93

94

95

96

97

98

99

100

101

102

103

104

105

106

107

108

109

110

111

112

113

114

115

116

117

118

119

120

121

122

123

124

125

126

127

128

129

130

131

132

133

134

135

136

137

138

139

140

141

142

143

144

145

146

147

148

149

150

151

152

153

154

155

156

157

158

159

160

161

162

163

164

165

166

167

168

169

170

171

172

173

174

175

176

177

178

179

180

181

182

183

184

185

186

187

188

189

190

191

192

193

194

195

196

197

198

199

200

201

202

203

204

205

206

207

208

209

210

211

212

213

214

215

216

217

218

219

220

221

222

223

224

225

226

227

228

229

230

231

232

233

234

235

236

237

238

239

240

241

242

243

244

245

246

247

248

249

250

251

252

253

254

255

256

257

258

259

260

261

262

263

264

265

266

267

268

269

270

271

272

273

274

275

276

277

278

279

280

281

282

283

284

285

286

287

288

289

290

291

292

293

294

295

296

297

298

299

300

301

302

303

304

305

306

307

308

309

310

311

312

313

314

315

316

317

318

319

Overview

The New York City Department of Transportation (NYC DOT) maintains the City's 12,760 miles of sidewalks and approximately 185,000 corners. Pedestrian (curb) ramps are an integral component of the sidewalk network.

Pedestrian ramps provide access on and off our streets and sidewalks and are an essential tool for all pedestrians, especially aging New Yorkers and persons with disabilities.



Pedestrian Ramp Upgrades and Modifications

NYC DOT developed a program dedicated to upgrading and installing new pedestrian ramps and is committed to making pedestrian space safe and accessible for all road users. Existing pedestrian ramps must comply with the 2010 Americans with Disabilities Act Standards for Accessible Design (ADA). New and upgraded pedestrian ramps will be constructed to comply with the latest version of NYC DOT's Highway Rules, Standard Specifications, Standards Details of Construction, and the Americans with Disabilities Act (ADA), and will include a detectable warning surface in a color that contrasts with surroundings to help guide persons who are blind or have low vision.

In addition, NYC DOT completed collecting data on all pedestrian ramps throughout the city. This effort will aid in the evaluation of existing conditions, support compliance analysis of ramps, and guide the development of a prioritization model that will determine areas with greater need throughout the five boroughs.



NYC DOT currently addresses pedestrian ramp installations and upgrades through the following efforts:

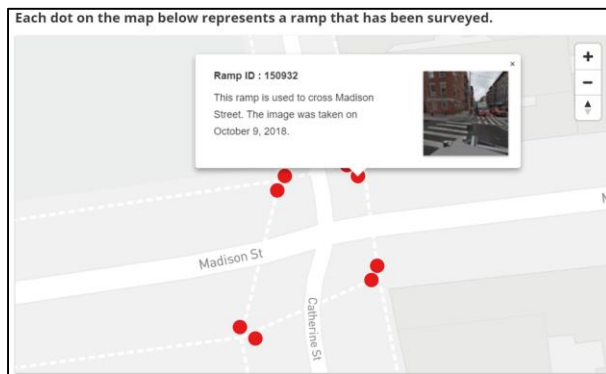
- When streets are resurfaced;
- During the implementation of Street Improvement Projects;
- When addressing sidewalk defects (Prior Notice Contracts);
- As part of capital projects; and
- Through a formalized complaint process.

Beyond these efforts, NYC DOT is also monitoring the work performed by private utilities, developers and contractors working on behalf of other City agencies.



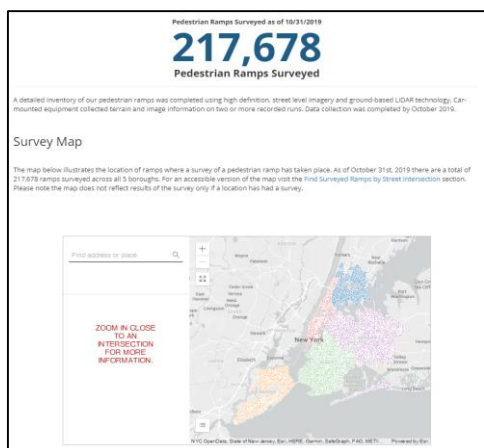
Pedestrian Ramp Survey

The City of New York, through NYC DOT, undertook an important effort to collect data on pedestrian ramps located throughout the city at corners, mid-block crossings and medians.



This collection utilized mobile technology to capture high definition, street level imagery and ground-based LiDAR data. The data was analyzed through an automated process to extract the measurements of each ramp. The locations and assessment results are available on the [Pedestrian Ramp Program Website](#). There are a total of 217,678 ramps in the five boroughs.¹ A map of program progress is also available in the [Program Progress](#) section of the website.

An evaluation of the data obtained from the survey will be used to identify the areas of greater need in each borough, to enhance NYC DOT's current pedestrian ramp maintenance program, and continue to provide safe and accessible corners compliant with ADA accessibility requirements.

A screenshot of the "Find Surveyed Ramps by Street Intersection" form. It includes an "Accessibility Help" button and a three-step process: 1. Select Borough, 2. Add Street Name, and 3. Select Cross Street. The first step is currently active, showing a dropdown menu for selecting a borough.

¹The information shows locations with existing, surveyed pedestrian ramps. If a dot is not shown, the location was not surveyed or has no pedestrian ramps. DOT's continued quality assurance work on the survey data may change the number of ramps published to date.

Planned Pedestrian Ramp Construction Schedule

NYC DOT has doubled the number of contracts registered annually and expects to increase the number of in-house crews constructing pedestrian ramps. The pedestrian ramps constructed for this fiscal year's reporting period for each construction type and construction origin are presented under the progress report section.

An **installation** is a pedestrian ramp installation at a corner where a ramp does not exist.

An **upgrade** is a repair, replacement or other improvement to one or more elements of an existing pedestrian ramp that will bring the ramp into compliance with the ADA.

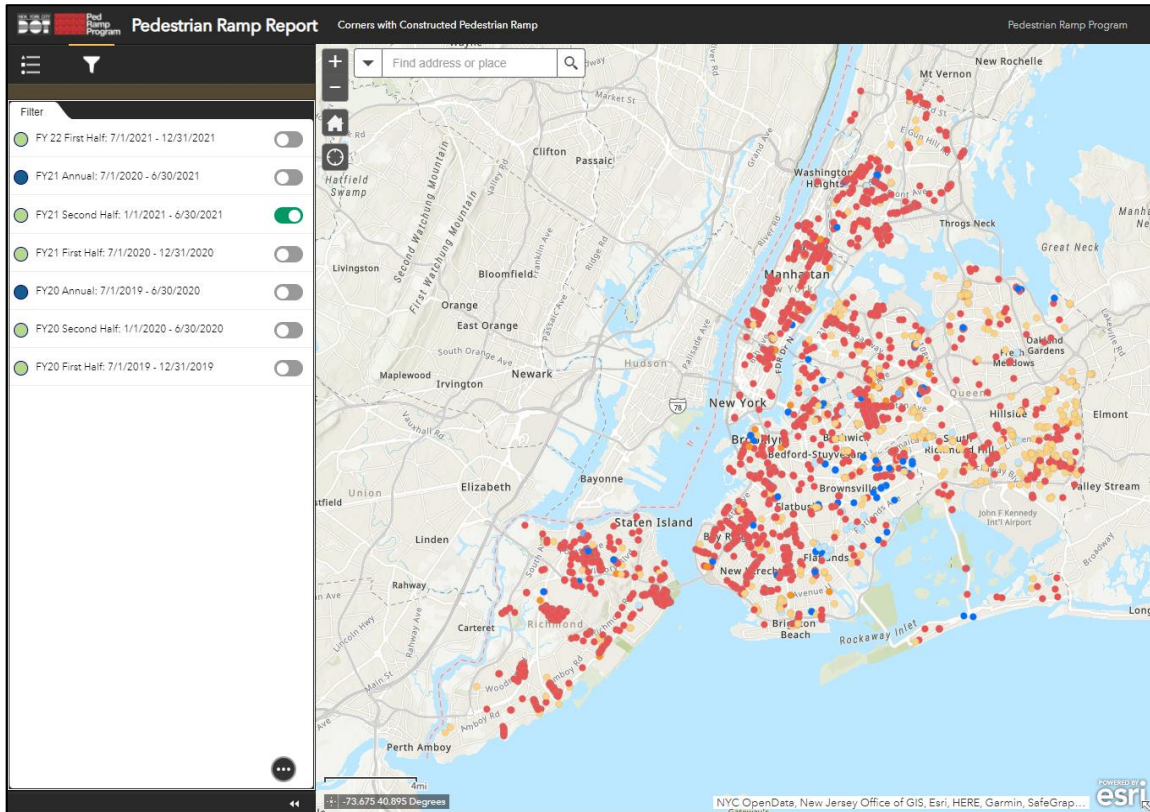
A **standard corner** is one that does not require structure or utility relocation or that may not require a unique design drawing.

A **complex corner** is one that requires a unique design drawing to be prepared in order to install or upgrade a pedestrian ramp due to an unusual site condition.



Progress Report: January 1, 2021 – June 30, 2021

NYC DOT provides reports semi-annually outlining the progress made on the construction of pedestrian ramps. DOT developed a GIS color-coded map as part of each report posted on NYC DOT's Pedestrian Ramp Program Website, which can be [accessed directly through this link](#).



The following charts provide information covering January 1, 2021 through June 30, 2021:

1. Total number of corners installed.
2. Total number of corners upgraded.
3. Total number of corners constructed in connection with resurfaced stretches (known as “resurfacing”).
4. Total number of corners constructed in response to complaints.
5. Total number of corners constructed through priority-based work.

Corners Constructed: January 1, 2021 – June 30, 2021

CONSTRUCTION TYPE / ORIGIN	CORNERS CONSTRUCTED JANUARY 2021 – JUNE 2021	TOTAL CORNERS CONSTRUCTED JULY 2017- JUNE 2021
1. INSTALLATIONS	139	1,800
2. UPGRADES	2,607	26,052
3. RESURFACING	2,047	21,400
4. COMPLAINTS*	73	273
5. PRIORITY BASED**	N/A	N/A

*If a complaint falls along a resurfacing stretch it is counted under resurfacing.

Corners Constructed Through Priority-Based Work

**After addressing corners following resurfacing and complaints, NYC DOT will combine the survey data with additional geographic and demographic information to determine priority-based work locations. With the information obtained from this analysis, NYC DOT will prioritize locations in the five boroughs with the intent to supplement the program.

NYC DOT is committed to the successful implementation of this program, and towards this goal, is addressing pedestrian ramp installations and upgrades throughout the five boroughs.

