

Pedestrian Ramp Program

Fiscal Year 2026 Semi-Annual Progress Report



Issued February 13, 2026

Covering July 1, 2025 – December 31, 2025

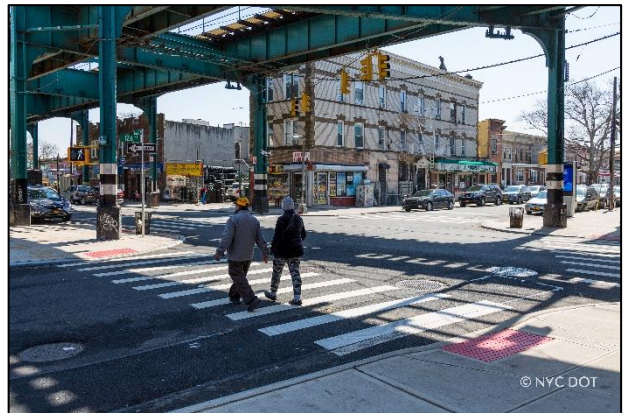


www.nycpedramps.info

Overview

The New York City Department of Transportation (NYC DOT) maintains the City's 12,760 miles of sidewalks and approximately 185,000 corners. Pedestrian (curb) ramps are an integral component of the sidewalk network.

Pedestrian ramps provide access on and off our streets and sidewalks and are an essential tool for all pedestrians, especially aging New Yorkers and persons with disabilities.



Pedestrian Ramp Upgrades and Modifications

NYC DOT developed a program dedicated to upgrading and installing new pedestrian ramps and is committed to making pedestrian space safe and accessible for all road users. Existing pedestrian ramps must comply with the 2010 Americans with Disabilities Act Standards for Accessible Design (ADA). New and upgraded pedestrian ramps will be constructed to comply with the latest version of NYC DOT's Highway Rules, Standard Specifications, Standard Details of Construction, and the Americans with Disabilities Act (ADA), and will include a detectable warning surface in a color that contrasts with its surroundings to help guide persons who are blind or have low vision.

In addition, NYC DOT completed collecting data on all pedestrian ramps throughout the city. This effort will aid in the evaluation of existing conditions, support compliance analysis of ramps, and guide the development of a prioritization model that will determine areas with greater need throughout the five boroughs.



NYC DOT currently addresses pedestrian ramp installations and upgrades through the following efforts:

- When streets are resurfaced;
- During the implementation of Street Improvement Projects;
- When addressing sidewalk defects (Prior Notice Contracts);
- As part of capital projects; and
- Through a formalized complaint process.

Beyond these efforts, NYC DOT is also monitoring the work performed by private utilities, developers and contractors working on behalf of other City agencies.



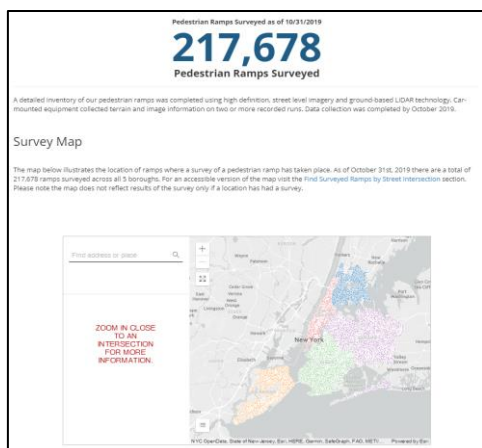
Pedestrian Ramp Survey

The City of New York, through NYC DOT, undertook an important effort to collect data on pedestrian ramps located throughout the city at corners, mid-block crossings and medians.



This collection utilized mobile technology to capture high definition, street level imagery and ground-based LiDAR data. The data was analyzed through an automated process to extract the measurements of each ramp. The locations and assessment results are available on the [Pedestrian Ramp Program Website](#). There are a total of 217,678 ramps in the five boroughs.¹ A map of program progress is also available in the [Program Progress](#) section of the website.

An evaluation of the data obtained from the survey will be used to identify the areas of greater need in each borough, to enhance NYC DOT's current pedestrian ramp maintenance program, and continue to provide safe and accessible corners compliant with ADA accessibility requirements.

A screenshot of a web form titled "Find Surveyed Ramps by Street Intersection". It includes an "Accessibility Help" button and a three-step process: 1. Select Borough, 2. Add StreetName, and 3. Select Cross Street. The first step is currently active, showing a dropdown menu for selecting a borough.

¹The information shows locations with existing, surveyed pedestrian ramps. If a dot is not shown, the location was not surveyed or has no pedestrian ramps. DOT's continued quality assurance work on the survey data may change the number of ramps published to date.

Planned Pedestrian Ramp Construction Schedule

NYC DOT has increased the number of contracts registered annually and has increased the number of in-house crews constructing pedestrian ramps. The pedestrian ramps constructed for this fiscal year's reporting period for each construction type and construction origin are presented under the progress report section.

An **installation** is a pedestrian ramp installation at a corner where a ramp does not exist.

An **upgrade** is a repair, replacement or other improvement to one or more elements of an existing pedestrian ramp that will bring the ramp into compliance with the ADA.

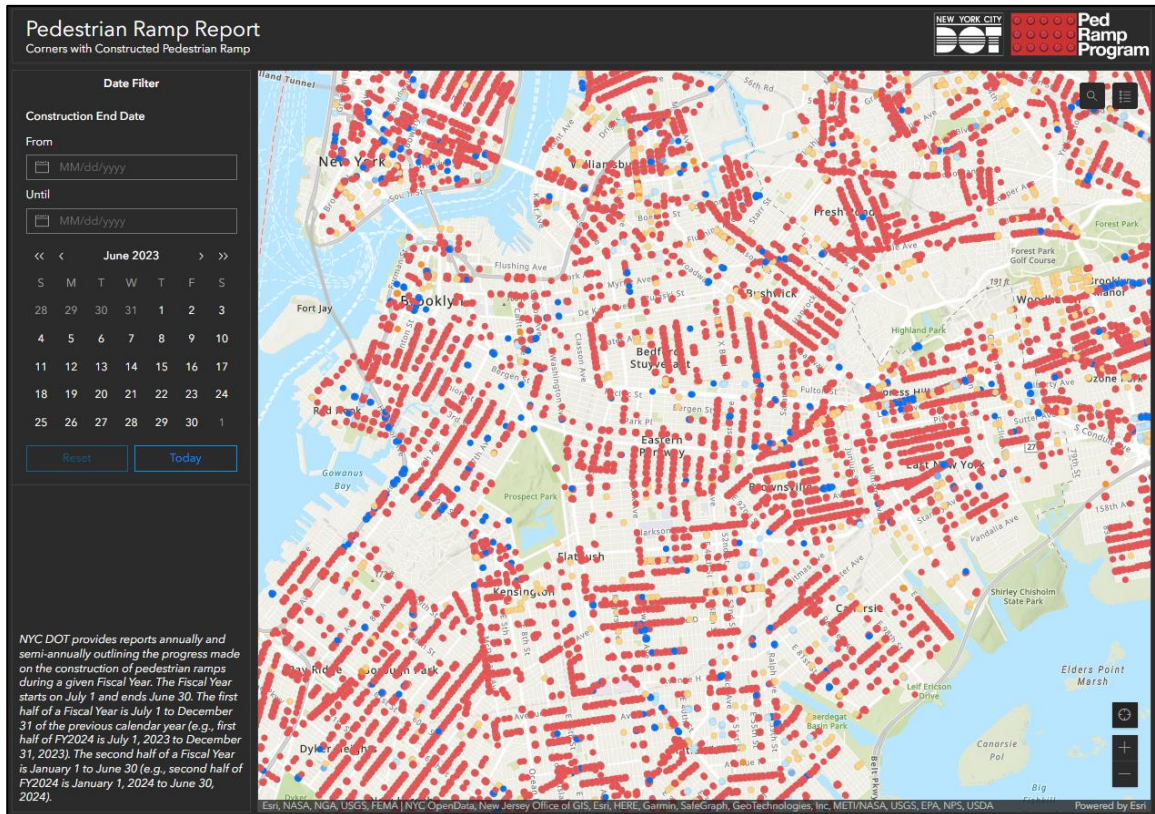
A **standard corner** is one that does not require structure or utility relocation or that may not require a unique design drawing.

A **complex corner** is one that requires a unique design drawing to be prepared in order to install or upgrade a pedestrian ramp due to an unusual site condition.



Progress Report: July 1, 2025 – December 31, 2025

NYC DOT provides reports semi-annually outlining the progress made on the construction of pedestrian ramps. DOT developed a GIS color-coded map as part of each report posted on NYC DOT's Pedestrian Ramp Program Website, which can be [accessed directly through this link](#).



The following charts provide information covering July 1, 2025 through December 31, 2025:

1. Total number of corners installed.
2. Total number of corners upgraded.
3. Total number of corners constructed in connection with resurfaced stretches (known as “resurfacing”).
4. Total number of corners constructed in response to complaints.
5. Total number of corners constructed through priority-based work.

Corners Constructed: July 1, 2025 – December 31, 2025 and July 1, 2017 – December 31, 2025

FY26				FY18 - FY26		
JULY 2025 – DECEMBER 2025				JULY 2017 – DECEMBER 2025		
	Standard	Complex	Total	Standard	Complex	Total
Installations	553	91	644	3,576	1,829	5,405
Upgrades	3,763	81	3,844	57,781	2,819	60,600
TOTAL	4,316	172	4,488	61,357	4,648	66,005

FY26				FY18 - FY26		
	JULY 2025 – DECEMBER 2025			JULY 2017 – DECEMBER 2025		
	Standard	Complex	Total	Standard	Complex	Total
Resurfacing	4,042	152	4,194	56,154	3,100	59,254
Installations	499	74	573	3,050	1,270	4,320
Upgrades	3,543	78	3,621	53,104	1,830	54,934
Complaints*	165	14	179	1,404	91	1,495
Installations	13	12	25	139	49	188
Upgrades	152	2	154	1,265	42	1,307
Priority-Based**	N/A	N/A	N/A	N/A	N/A	N/A
Installations	N/A	N/A	N/A	N/A	N/A	N/A
Upgrades	N/A	N/A	N/A	N/A	N/A	N/A
Other***	109	6	115	3,799	1,457	5,256
Installations	41	5	46	387	510	897
Upgrades	68	1	69	3,412	947	4,359
TOTAL	4,316	172	4,488	61,357	4,648	66,005

* Complaints received for locations along resurfacing stretches are counted under Complaints to more accurately reflect total complaints; in prior reports these were classified under Resurfacing. Beginning with this report, this recategorization is reflected in both the current reporting period and cumulative totals.

** See Priority-Based Work explanation in report

*** Includes stand-alone installation contracts, and work done by private developers, utility companies and other agencies



Corners Constructed Through Priority-Based Work

******After addressing corners following resurfacing and complaints, NYC DOT will combine the survey data with additional geographic and demographic information to determine priority-based work locations. With the information obtained from this analysis, NYC DOT will prioritize locations in the five boroughs with the intent to supplement the program.

NYC DOT is committed to the successful implementation of this program, and towards this goal, is addressing pedestrian ramp installations and upgrades throughout the five boroughs.

